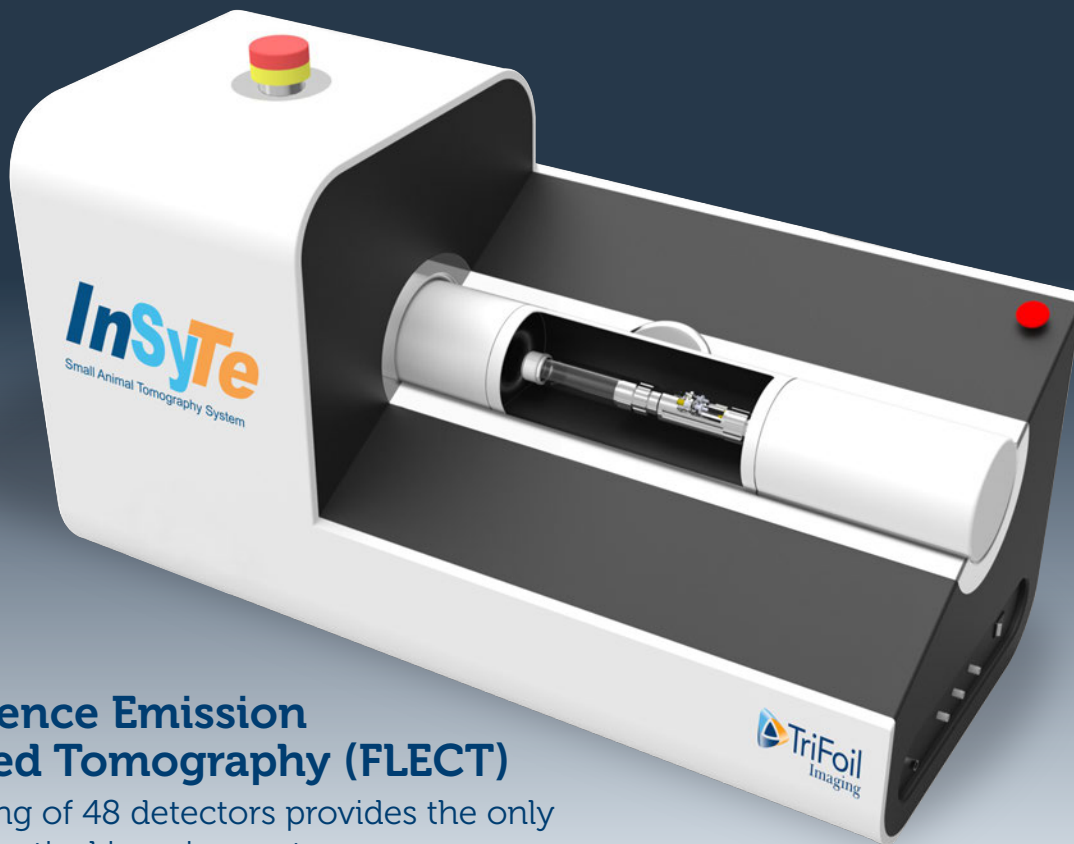


InSyTe™ FLECT/CT

Our patented fluorescence imaging technology provides the only TRUE 360° optical and X-Ray computed tomographic scan



Fluorescence Emission Computed Tomography (FLECT)

Rotating ring of 48 detectors provides the only true 3D optical imaging system
4 lasers and 5 filters span the NIR optical window

X-Ray CT

Fast, low-dose microCT
4 selectable X-ray filters for clinical quality soft tissue contrast

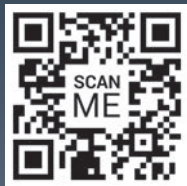
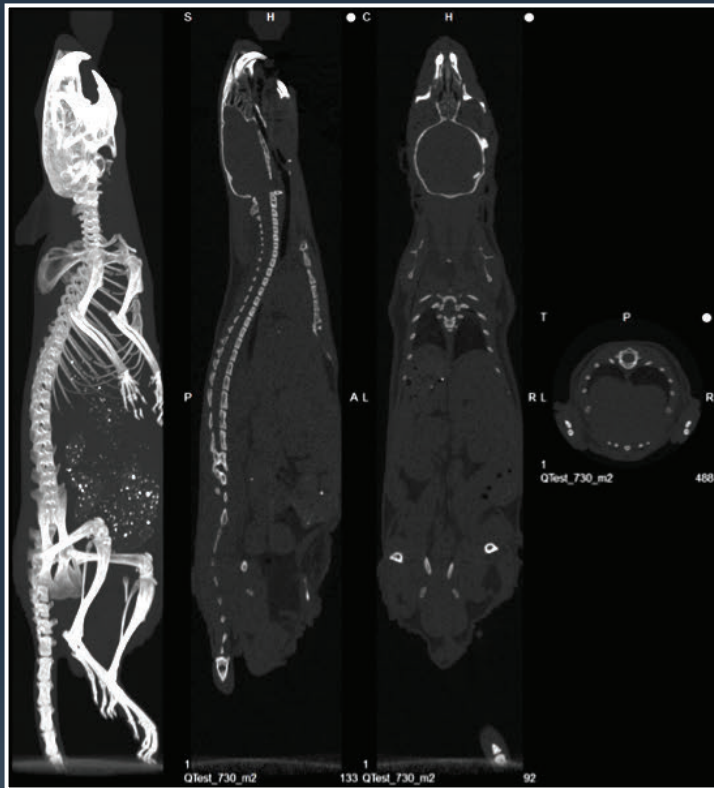
InSyTe FLECT / CT

Seamless FLECT and CT co-registration
User-friendly controls for varied applications
3 clear imaging cell diameters for mice to small rats

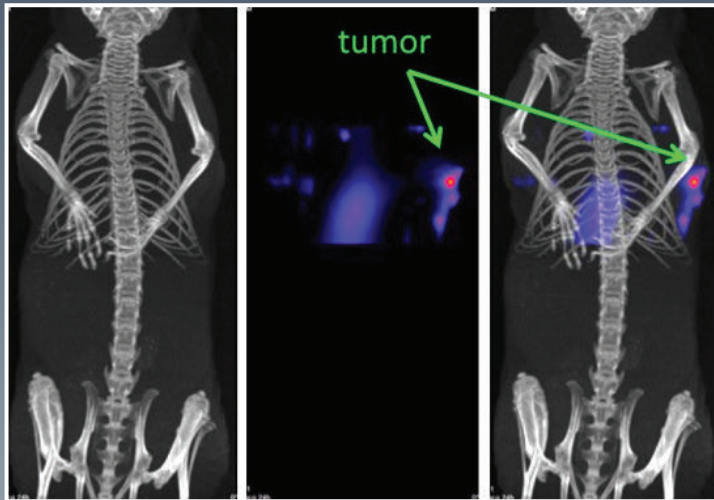
*For Protocol development
please contact TriFoil's Application Scientists*



www.trifoilimaging.com



Whole body mouse CT image with clinical-quality soft tissue contrast. Clearly visible are lung, kidney, heart, intestine, as well as bone structure.



Balb/c-nu/nu nude mice inoculated subcutaneously with human adenocarcinoma A431 cells on the right shoulder. Non-invasive FLECT/CT imaging experiments were performed approximately 2 weeks after tumor inoculation. Mice were dosed with 5 mg/kg of ICG via intravenous injection. The FLECT image at 24 hours showed significant ICG retention in the tumor. Non-tumor reference tissue did not show accumulation of ICG.

INSYTE FLECT/CT SPECIFICATIONS

FLECT:

Standard lasers (nm): 642, 705, 730, 780

Standard emission filters (nm): 695, 710,

803, 813, 853

FOV: 40 mm x 130 mm (trans axial x axial)

Bore size: 50 mm

Concentration sensitivity: ~1 pmol/mm³

Dynamic range more than 10¹¹ (110 dB to 120 dB)

Integration times ranging from 500 μs to 10 s

Employs Least-Squares filtering for noise reduction (Up to 64x reduction in noise)

Spatial resolution: as low as 1 mm

X-Ray CT:

FOV: 50 mm x 140 mm (trans axial x axial)

Magnification: 2.1

Pixel Size: 75 μm

Detector active area: 115 mm x 65 mm

Spot size: 50 μm

Power: 50 W

Max current: 1 mA configurable exposure time

Energy range: 30 kVp to 50 kVp

Physical characteristics:

System suitable for standard benchtop

Recommended temperature: 18°C to 24°C

Recommended relative humidity: 40% to 80%

Voltage: 110 - 240 VAC

Max current: 12 A at 115 V and 6 A at 230 V

Dimensions: 135 cm x 80 cm x 80 cm

Weight: 65 kg (FLECT); 120 kg (FLECT/CT)



9457 De Soto Ave.
Chatsworth, CA 91311
Phone: 818-709-2468
www.trifoilimaging.com



TriFoil Imaging is proudly represented in Australia and New Zealand by AXT Pty. Ltd.
1/3 Vuko Pl., Warriewood
NSW 2102 Australia
T. +61 (0)2 9450 1359 F. +61 (0)2 9450 1365
W. www.axt.com.au E. info@axt.com.au